

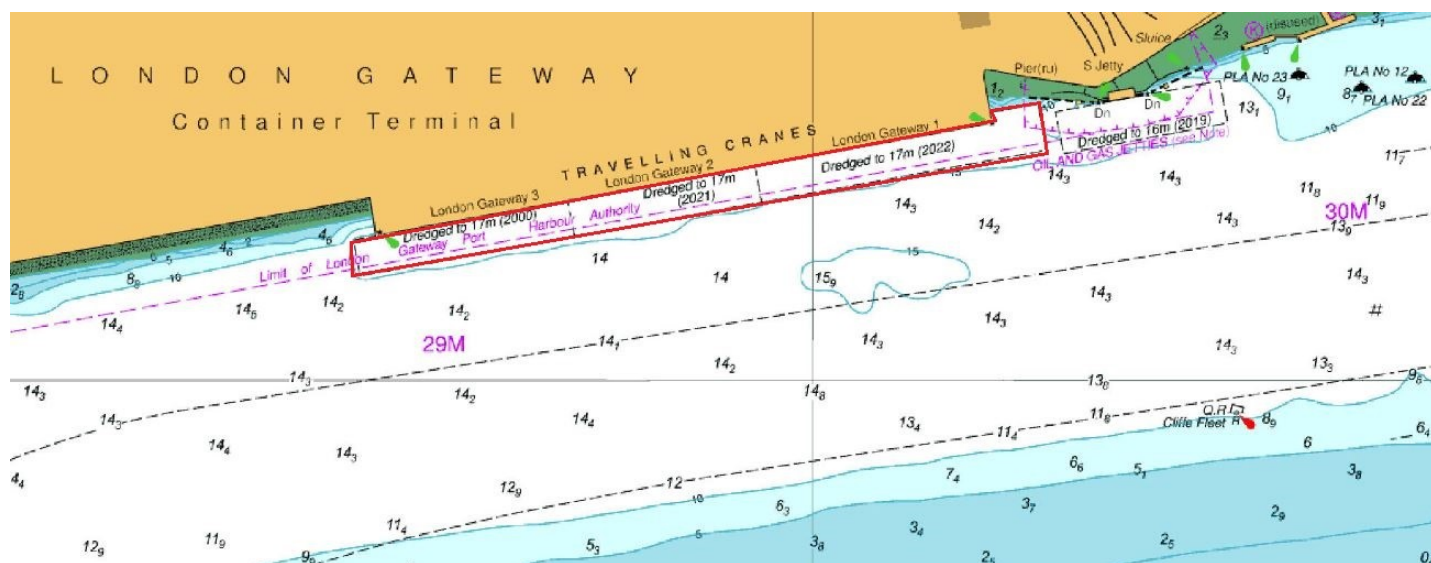
Sea Reach - London Gateway - Dredging

NOTICE TO MARINERS

Sea Reach - London Gateway - Dredging

Mariners are advised that, on or about Tue 24th June 2025, contractors instructed by London Gateway Port will commence dredging operations in the vicinity of Berths No. 1, 2 and 3.

Dredging will be carried out by dredger "AQUADELTA", using the water injection dredging method, during ebb tides only. The approximate dredge area is indicated by the red boundaries on the chartlet below:



The Notice will remain published, with its expiry date extended as required, as long as this dredging campaign continues; and will be withdrawn without further notice when the dredging is completed

Any requirements to proceed with caution or at slow speed, will be made in accordance with the procedures set out in the Port of London Authority's [Port Information Guide](#), under 'London VTS', 'Section 4' with the International Code Flags 'Romeo Yankee' displayed, which are illustrated below.

Telephone calls, VHF radio traffic, CCTV and radar traffic images may be recorded in the VTS Centre



L51-25

David Allsop, Deputy Harbour Master

Published: 20/06/2025

Expires: 31/07/2025

Sea Reach

OF

Sea Reach - London Gateway - Dredging

NOTICE TO MARINERS



Romeo
Yankee

The display of these signals will be in addition to any lights or shapes required under local regulations and the International Regulations for Preventing Collisions at Sea.

Further details will be broadcast as needed by **London VTS** on VHF channels **68**.

Telephone calls, VHF radio traffic, CCTV and radar traffic images may be recorded in the VTS Centre

Port of London Authority
London River House, Royal Pier Road,
Gravesend, Kent DA12 2BG

This Notice may be amended or withdrawn at any time. To check the validity of this notice, scan the QR code or visit pla.co.uk/notices

