

L34-25

David Allsop, Deputy Harbour Master

Published: 02/05/2025

Expires: 26/05/2025

Sea Reach

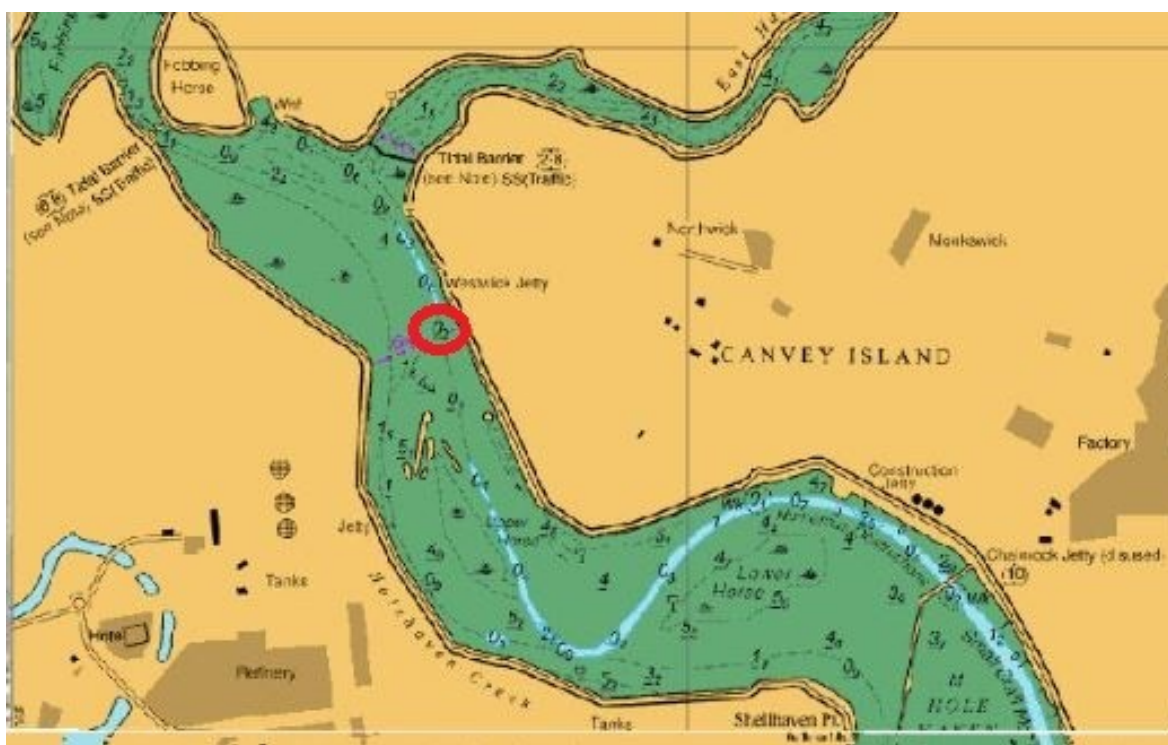


Sea Reach - Holehaven Creek - Gas Pipeline Works

NOTICE TO MARINERS

Sea Reach - Holehaven Creek - Gas Pipeline Works

Mariners are advised that, on or about **Monday 5th May 2025**, contractors instructed by the operators of the underwater gas pipeline in Holehaven Creek will commence works on the pipeline. These works are expected to be complete within **3 weeks** of commencement. The general location of the works is indicated by the red markings on the chartlet below:



These works comprise installation of scour protection on the riverbed, and will involve diving operations;

Telephone calls, VHF radio traffic, CCTV and radar traffic images may be recorded in the VTS Centre



L34-25

David Allsop, Deputy Harbour Master

Published: 02/05/2025

Expires: 26/05/2025

Sea Reach



Sea Reach - Holehaven Creek - Gas Pipeline Works

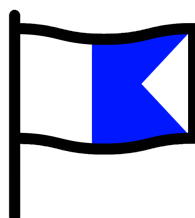
NOTICE TO MARINERS

persons working on the waterline and riverbed; and lifting operations. Workboat EMILIA D will support these works, and is expected to remain anchored fore & aft in position for the duration of the works; a similar workboat may be substituted for EMILIA D if necessary. Small craft are also expected to operate in this area in connection with these works.

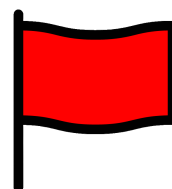
Requirements for vessels to proceed with caution or at slow speed will be made in accordance with the procedures set out in the Port of London Authority's Port Information Guide, under 'Speed Reductions' with the International Code Flags 'Romeo Yankee', which are illustrated below, displayed. Signals specified in Thames Byelaw 33 are expected to be displayed in relation to diving operations.



**Romeo
Yankee**



Alpha



**Diver point of
entry in water**

The display of these signals will be in addition to any lights or shapes required under local regulations and the International Regulations for Preventing Collisions at Sea (IRPCS).

Further details will be broadcast as needed by **London VTS** on VHF channel **68**.

Telephone calls, VHF radio traffic, CCTV and radar traffic images may be recorded in the VTS Centre

